

Urban surfaces

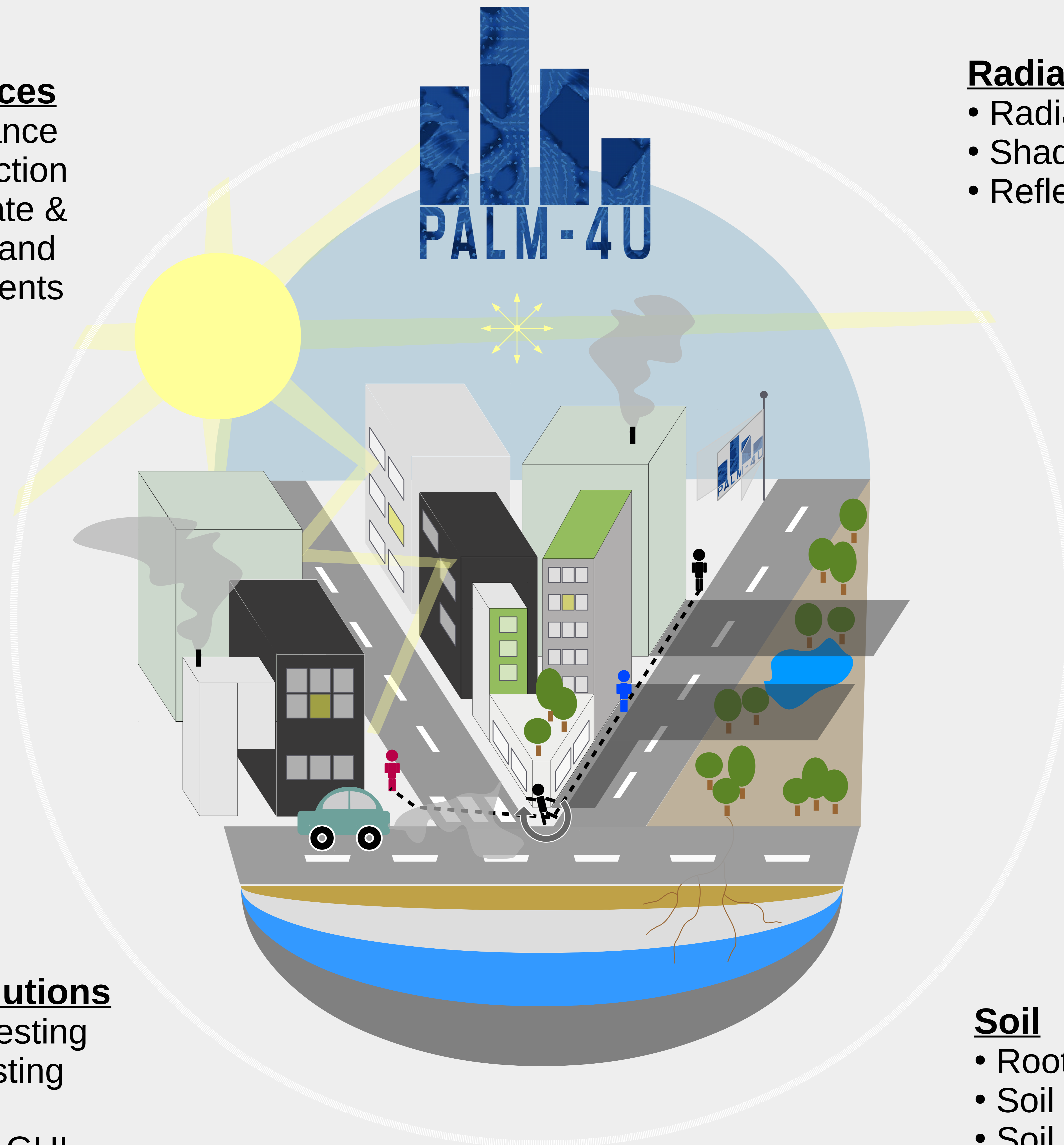
- Energy balance
- Heat conduction
- Indoor climate & energy demand
- Green elements

Chemistry

- Transport
- Reactions
- Photolysis
- Emissions
- Aerosols

Technical solutions

- Mesoscale nesting
- LES-LES nesting
- RANS mode
- User-friendly GUI



Radiation

- Radiation budget
- Shading
- Reflections

Impact

- Multi-agent system
- Biometeorological analysis

Vegetation

- Energy balance
- Momentum sink
- Shading

Soil

- Roots
- Soil temperature
- Soil moisture